

Hard Disk Installation Procedures



Before you start to install a hard disk driver, please read this manual and follow each step carefully.

WARNING!

Before you open the top cover of the relook-3000, unplug the power cord first. There is a risk of electric shock.

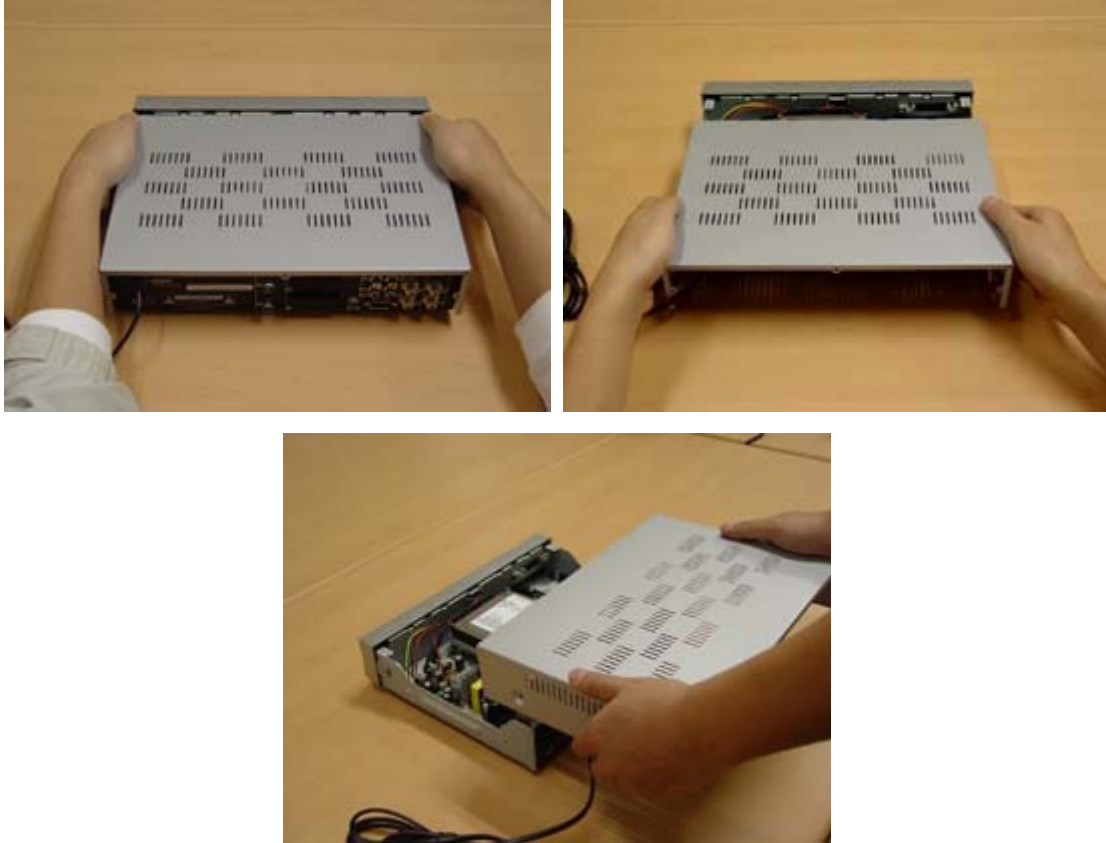
WARNING!

Installation or exchange of a hard disk drive should only be carried out by qualified personnel or a dealer trained for the purpose.

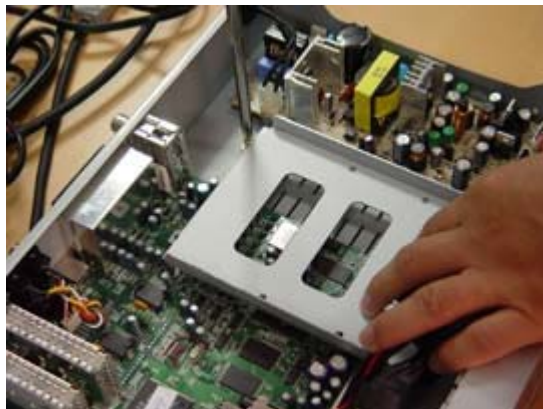
1. With a cross-slot/Phillips head screwdriver, unscrew the four (4) screws on both sides of the unit and three (3) screws on the rear of the unit.



2. Slide the top cover away from the unit toward the rear. Sometimes this can be a bit tight, pull gently.



3. Unscrew four(4) screws on the foot of the HDD mounting bracket.



4. Carefully take out the HDD mounting bracket and unplug two (2) cables from CN101 which is printed on circuit board and CN102, which is also printed on circuit board



5. Mount an HDD on top of the bracket and fasten four (4) screws securely.



6. Connect the IDE cable and HDD power cable to the HDD.



7. Insert the HDD-mounted bracket into its original position and fasten four (4) screws on the foot of the bracket.



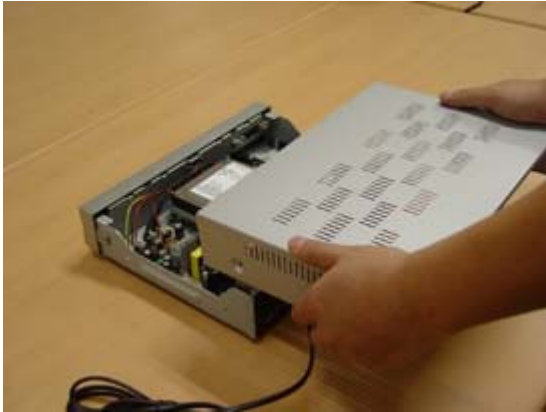
8. Plug the power cable from SMPS into CN101 and the cable from front panel into CN102.



9. Take care to keep IDE and power cable leads as close as possible to the HDD.



10. Slide the top cover from the rear over the unit smoothly to create a tight fit.



11. Fasten the four (4) screws on both sides of the unit and three (3) screws on the rear of the unit.

